



Georgian Implementation Science Fogarty Training (GIFT) Program Ilia State University & Yale University Accelerating Impact: Immersive Summer Bootcamp in Implementation Science and Biostatistics Meet Our Esteemed Summer Bootcamp Speakers



Prof Rick Altice, MD, MA

Rick Altice is a professor of Medicine, Epidemiology and Public Health and is a clinician, clinical epidemiologist, intervention and implementation science researcher at Yale University School of Medicine and School of Public Health. He is a MPI of the GIFT project. He is also serving as a Visiting Professor at University Malaya. His work has emerged primarily with a global health focus with funded research projects internationally in Malaysia, Ukraine, Moldova, Armenia, Kyrgyzstan, Peru, and Indonesia. He is currently also collaborating on projects with the NIH, WHO, UNAIDS, USAID, PEPFAR and UNODC. He is currently the director for two International Implementation Science Research and Training Centers with collaborations between Yale University and the University of Malaya and Sichuan University. Prof Altice will conduct a live Nominal Group Technique session and share his real-world implementation experience during war and pandemic during GIFT Bootcamp 2024.



Prof Denise Esserman, PhD

Denise Esserman is a Professor of biostatistics at Yale School of Public Health, US. She is a MPI of the GIFT project. As a member of the Yale Center for Analytical Sciences, she collaborates with a number of departments at the Yale School of Medicine, including the Clinical and Translational Science Award Program, Patient-Centered Outcomes Research Institute, and the Cancer Center. Denise Esserman will introduce the audience to methodological and statistical considerations in implementation research during GIFT Bootcamp. She will be available for 'Ask the Expert' session to offer consultation on projects and grants. In addition, Prof Esserman will lead Biostatistics workshop during GIFT Bootcamp 2024.



Irma Kirtadze, MD, PhD

Irma Kirtadze is an Associate Professor of Addiction Studies at Ilia State University with over 20 years of experience researching drug use disorders and their linkage to blood-borne infections such as HIV, hepatitis B/C, and STIs. She is a MPI of the GIFT project. Prof. Kirtadze has served as a Principal Investigator and has expertise in both quantitative and qualitative research methods, including recruitment, interviewing, and delivering HIV prevention interventions for key populations. Prof. Kirtadze has led or been a member of numerous international cooperation projects, working as an expert on various donor-funded projects like 5% Initiative, PEPFAR, NIH/NIDA, Global Fund, USAID, UNAIDS, IOM, EUROPAID, and EMCDDA. Her focus is on HIV/AIDS prevention programs among key populations, HIV/AIDS prevention and harm reduction program expenditure analysis and costing, and implementation research in Eastern Europe and Central Asia. During the GIFT Bootcamp, Prof. Kirtadze will share her real-world experience in adapting evidence-based interventions, such as syringe vending machines, to the Georgian context.



Lynn Madden, PhD, MPA

Lynn Madden is a Chief Executive Officer at APT Foundation, a non-profit agency founded in 1970 by members of the Yale University Department of Psychiatry to promote health and recovery for those who live with substance use disorders and/or mental illness. Dr Madden holds a position as an assistant professor in the Yale School of Medicine AIDS program and as a faculty member in addiction medicine. Her interests and pursuits include large- and small-scale implementation projects that are focused on access to and quality in mental health care and substance abuse treatment services including integration with primary care, and integration of treatment for infectious diseases such as HIV/AIDS and HCV.



Luke Davis, MD

Associate Professor of Epidemiology and Medicine at Yale School of Medicine, US, affiliated faculty, Yale Institute for Global Health and Visiting Professor at University Malaya. Prof Luke Davis teaches implementation science course and mentors students at the Yale School of Public Health and is actively involved in several international research training programs focused on implementation science. Luke Davis's research is based in low-and-middle income settings and uses implementation research science methods to improve TB diagnosis and evaluation in high-burden, resource-constrained settings. In addition to the lectures on Implementation Science, Prof Davis will shed lights on adapting evidence-based interventions to new contexts during the GIFT Bootcamp.



Nino Makhashvili, MD, PhD

Nino Makhashvili a Professor of Healthcare at Ilia State University. She is a psychiatrist and public mental health expert. Nino directs the Master's Program on Mental Health and co-directs the Ph.D. program on Public Health; she leads the Mental Health Resource Center that, among other initiatives, runs the Students Counseling Centre. Her research interests include the mental health needs of war-affected populations, trauma-informed and trauma-specific interventions, mental health systems and policy, epidemiology of mental disorders, and human rights in mental health.



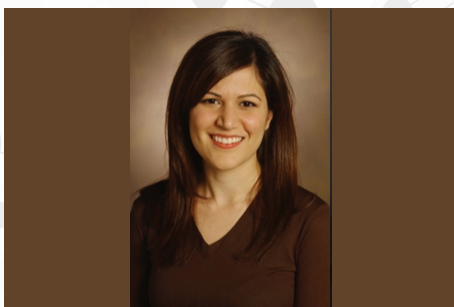
Prof Sten H. Vermund, MD, PhD

Prof Vermund is the Anna M.R. Lauder Professor of Public Health, and former Dean (2017-2022) of the Yale School of Public Health, and also serves as a Professor in Pediatrics at the Yale School of Medicine, US, and Visiting Professor at Universiti Malaya. He is a pediatrician and infectious disease epidemiologist focused on diseases of low and middle-income countries. Prof Vermund is the recipient of Allan Rosenfield Alumni Award for Excellence in Public Health, Mailman School of Public Health, Columbia University, US. Dr. Vermund's research background encompasses epidemiology, clinical trials, and implementation research, namely bringing efficacious clinical and public health tools to the field for assessing efficacy and scaling up in operations for HIV care and cervical cancer screening.



**E Jennifer Edelman, MD,
MHS, BS**

Jennifer Edelman, is a Professor of Medicine and Public Health, Director of the Research on Addiction Medicine Scholars Program and co-Director of Education at the Yale Center for Clinical Investigation, Yale University. Certified as an internist, HIV specialist and in Addiction Medicine, she serves as an HIV provider and the physician consultant in the Addiction Medicine Treatment Program at the Yale-New Haven Hospital. Her research focuses on optimizing HIV prevention and treatment in the context of substance use, including opioid, alcohol and tobacco use. Dr Edelman's plenary session at the bootcamp will focus on substance use disorder in HIV implementation science. In her capacity as a member of NIH grant review committees, Jen Edelman will provide feedback on proposals and research led by the Bootcamp participants.



Mona Sharifi MD, PhD

Dr. Mahnoosh (Mona) Sharifi is an Associate Professor of Pediatrics (General Pediatrics) and Biomedical Informatics and Data Science at Yale School of Medicine and Associate Professor of Biostatistics (Health Informatics) at the Yale School of Public Health. She serves as director of Pediatrics Health Services and Implementation Research and co-director of the National Clinician Scholars Program at Yale. Dr. Sharifi is a board-certified in pediatrics and clinical informatics, practices pediatric primary care at Fair Haven Community Health Center, and is a health services researcher focused on studying the implementation of interventions in pediatric primary care and community-based settings to prevent chronic diseases and promote equity, focusing on childhood obesity prevention and treatment. With continuous federal funding supporting her research from the AHRQ, NIH, and CDC since 2010, Dr. Sharifi has experience working with and leading transdisciplinary teams that are inclusive of students and trainees and has completed several successful projects applying qualitative, quantitative, mixed methods, and cost-effectiveness analysis in health services and implementation research.



David Otiashvili MD, PhD

Dr. Otiashvili is an Associate Professor of Healthcare at the School of Natural Sciences and Medicine, Ilia State University. David graduated from Tbilisi State Medical University and received a qualification as a psychiatrist. He spent ten years in clinical work treating patients with substance use disorders. As a NIDA Hubert Humphrey Fellow, he studied substance use research at Johns Hopkins University, Baltimore, USA. In 2014, he received PhD in Health Psychology from Charles University in Prague, Czech Republic. Over the last decade, David's primary focus has been on research and education programs related to substance use and HIV.



**Davit Baliashvili, MD,
PhD, MPH, MSc**

Davit Baliashvili received his MD and MPH degrees from Tbilisi State Medical University in the country of Georgia, followed by a Master of Science in Clinical Research degree at Emory University. He worked in the Department of Communicable Diseases at the National Center for Disease Control and Public Health of Georgia from 2014 to 2017 and participated in preparing and launching the Georgian hepatitis C elimination program. He obtained a Ph.D. degree in Epidemiology at Emory University in 2021, with the dissertation project examining the overlap and relationship between hepatitis C infection and tuberculosis. After returning to Georgia in 2021, Davit Baliashvili worked as a TEPHINET contractor for CDC's Division of Viral Hepatitis. He served as a Scientific Lead for viral hepatitis activities in Georgia and coordinated the scientific committee of the Georgian National Hepatitis C Elimination Program. Starting November 2023, Davit Baliashvili joined the CDC Georgia country office as a Senior Public Health Specialist. His portfolio is covering workforce development, health informatics, public health emergency management, viral hepatitis, and strengthening national public health institutions.



Ashley Hagaman, PhD, MPH

Ashley Hagaman, PhD is an Assistant Professor of Public Health in the Department of Social and Behavioral Sciences at Yale School of Public Health. She is also a qualitative methodologist with the Center for Methods in Implementation and Prevention Science and holds a secondary appointment in the Department of Anthropology. She contributes to the development of innovative qualitative and mixed-methods to improve the study and implementation of evidence-based health practices, incorporating and testing new passive data collection strategies and rapid analytic techniques. Dr Hagaman will speak about innovative qualitative and mixed method approaches to strengthen implementation science.



**Veriko Mirtskhulava, MD,
MPH, PhD**

Veriko Mirtskhulava joined Ilia State University in 2022, teaching master's students in public health, applied epidemiology, and biostatistics. She is a medical doctor with an MPH and PhD in epidemiology and global health, bringing over fifteen years of experience in TB research, programmatic management, and capacity building. Veriko served as a Global Fund TB Grant manager on M/XDR-TB control at the Georgian NTP and worked as a consultant for WHO, USAID, and ESDC, focusing on TB control program reviews and translational and operational research in Eastern Europe and Central Asia. She has conducted and analyzed LTBI surveys, clinical impact assessments of new diagnostics, and surveillance data analyses. In 2017, Veriko joined KNCV as a Technical Officer in Research and Data Management. She collaborated with the NTPs of Vietnam, Malawi, and Botswana to design and conduct TB prevalence and drug resistance surveys. Since May 2019, she has been a Senior Epidemiologist, supporting countries in introducing new drugs and regimens and building their translational research capacity.



Kate Nyhan, MLS, IPI PMC

Kate Nyhan is the research and education librarian for public health at Yale's Cushing/Whitney Medical Library and a lecturer in environmental health sciences at Yale School of Public Health. Her research interests include the use of evidence in languages other than English in evidence synthesis, the information behavior of the public health workforce, and research waste. Kate co-founded the Librarian Peer Reviewer Database, which helps handling editors find librarians to peer review evidence synthesis manuscripts, and the not-for-profit organization Community Access to Ventilation Information, which helps public libraries empower community members to measure and improve indoor air quality.



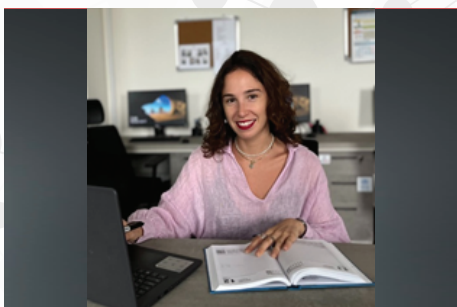
Eteri Machavariani MD MPH

Eteri Machavariani is an epidemiologist with a background in clinical psychiatry. Her research focuses on optimizing integrated services for overlapping epidemics of infectious diseases and substance use disorders in high-burden settings. She will discuss IMPACT, a randomized, controlled trial integrating opioid agonist therapies within primary care centers in Ukraine. Eteri will also be available for the 'Ask the Expert' session for consultation to early-career public health professionals.



**Tamar Zurashvili,
MD, MPH, PhD student**

Tamar Zurashvili is a public health specialist with over 10 years of experience working in various international projects in the fields of HIV/AIDS and TB. She has a background in family medicine, public health and epidemiology, with specific training and expertise in epidemiological research, qualitative and quantitative techniques. Since 2014, she has been a researcher and project coordinator at the Partnership for Research and Action for Health. She will be presenting her doctoral research project focusing on HIV stigma and using the implementation science approach.



**Mariam Pashalishvili,
MSc, PhD student**

Mariam Pashalishvili is a Chief Specialist at the Public Health Emergency Preparedness and Response Division at the National Center for Disease Control and Public Health. She holds a Bachelor's degree in Public Health from Tbilisi State Medical University and a Master's degree in Addiction Studies from Ilia State University. She is extensively trained in field epidemiology and emergency management. Currently pursuing her PhD, her research focuses on public health and epidemiology. Mariam is dedicated to applying her expertise to real-world public health challenges, striving to make a significant impact on public health policies and practices. In an upcoming session, she will be presenting her PhD research results, which has the potential to be developed into an implementation research grant.

